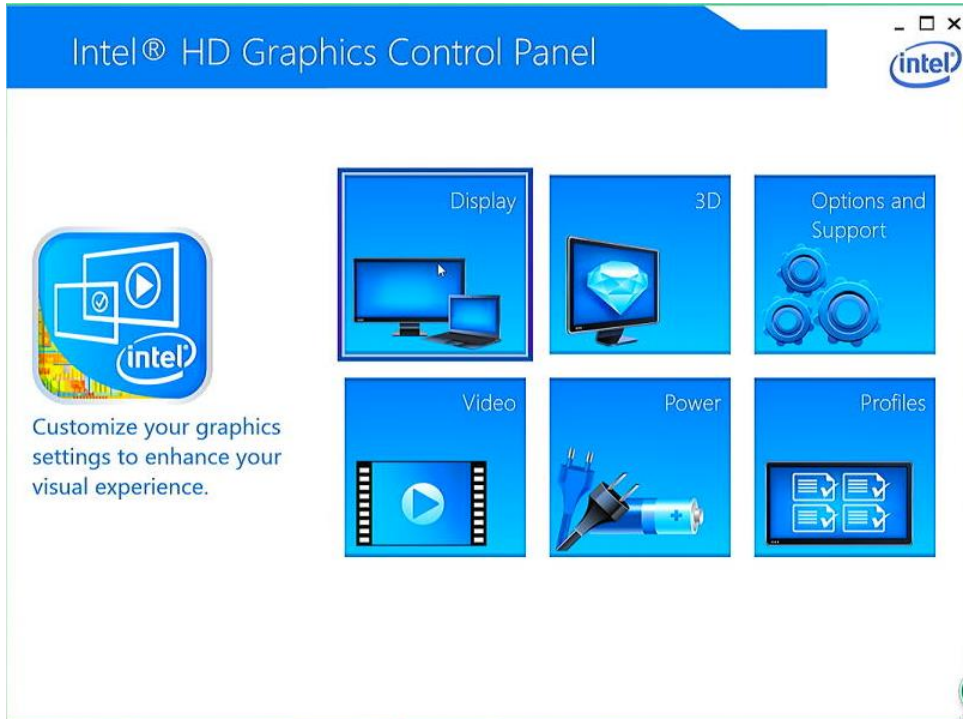


MeLE MiniPC FAQ

1. How to adjusting the resolution of video output via an HDMI device?

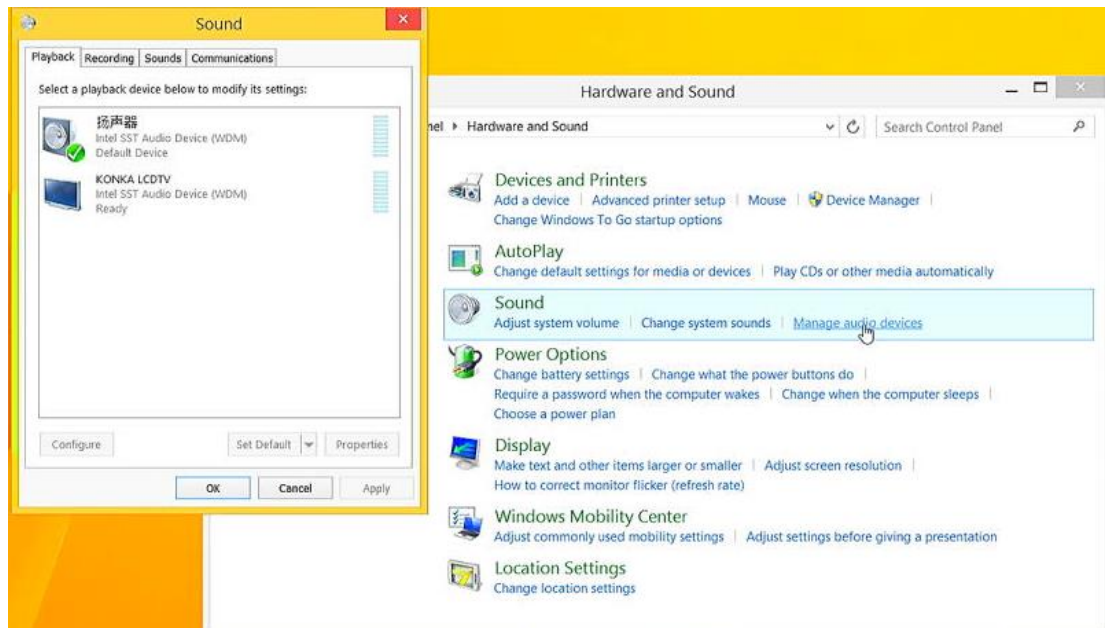
Please press right key of mouse, choose Graphics Properties > double click Display > To choose the correct "resolution" and "Refresh Rate" to adjust to correct display on TV.



2. How to configuring audio output via an HDMI device?

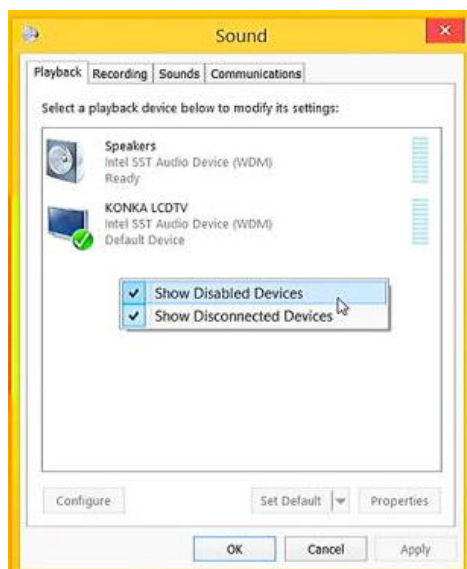
Follow the steps below to enable audio output via HDMI when connecting the MeLE PCG03 MeLE PCG03 to a TV or receiver via HDMI.

- a. Access the Sound settings via the system Control Panel.
- b. Under Playback devices, click the display device that corresponds with your HDMI audiocompatible display
- c. Click the Set Default button in the lower right hand corner.
- d. Click OK to exit the setup.

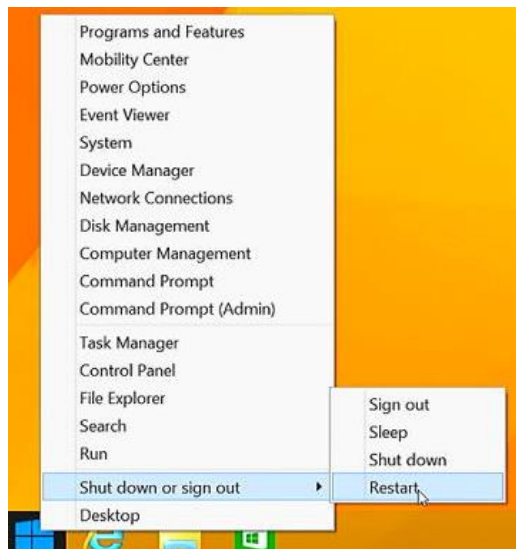


3. What to do when there is no HDMI audio device the playback device list?

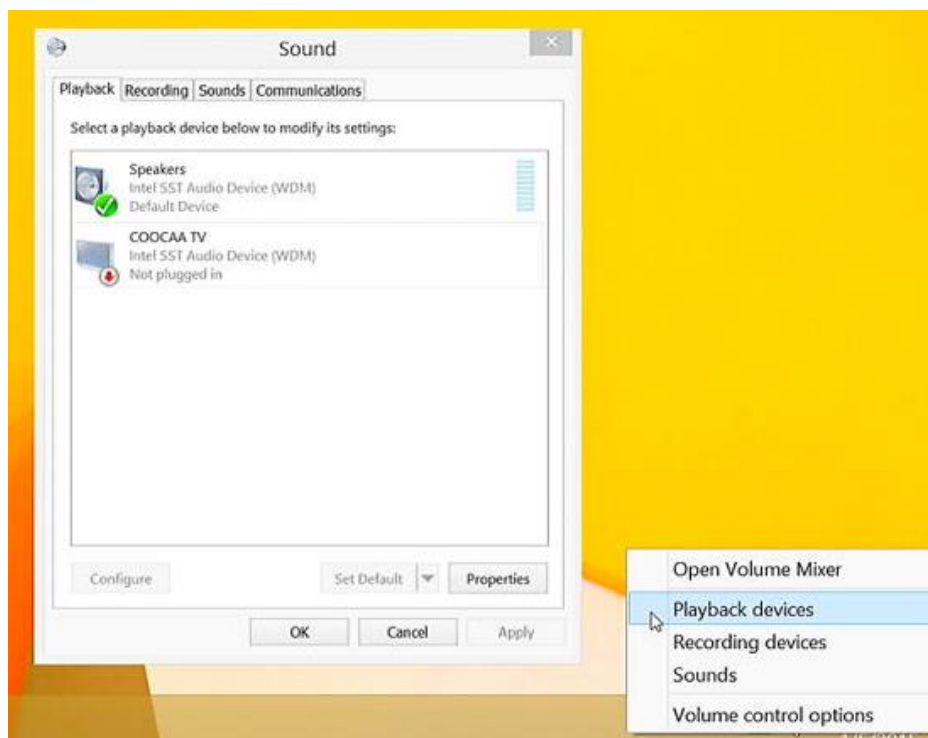
Step1. Click Right mouse, enable show disabled Devices, select your TV as the default audio device. If it's not helpful, please try step2.



Step2. Keep your TV on and the HDMI cable plugged in and Restart your MiniPC.



4. What to do when the HDMI audio device not plugged in?



a. This problem happens sometimes when you change a TV. Restart your MiniPC will help you to resolve this problem.

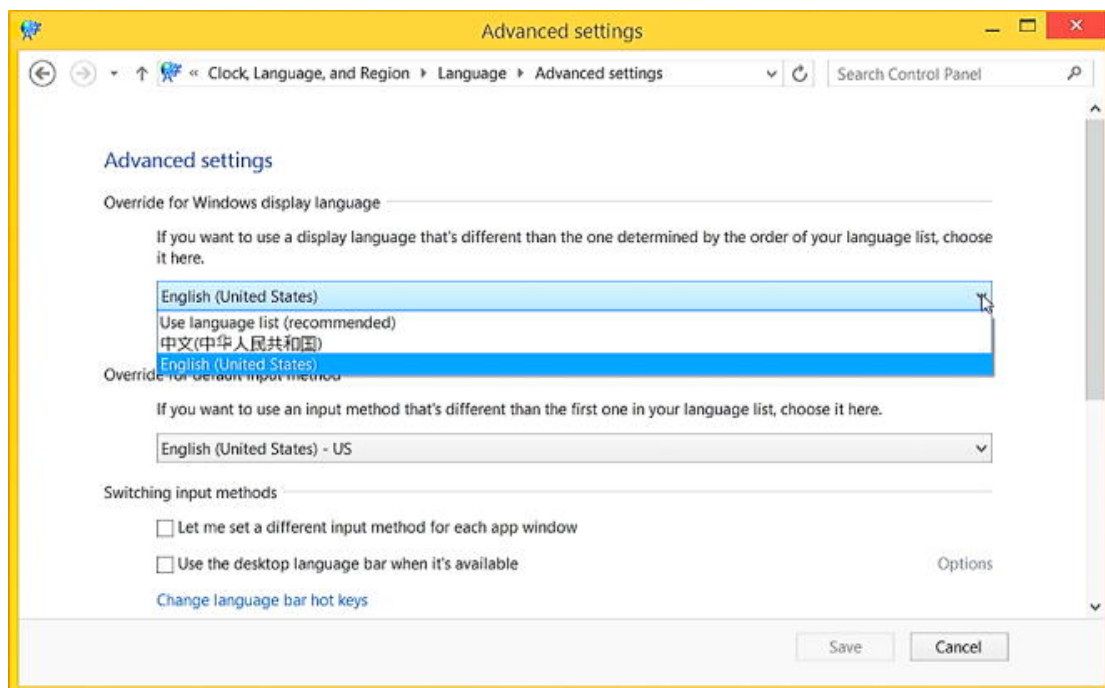
b. For the first time you use MiniPC or when you change a TV, please connect your MiniPC to the TV with HDMI cable and Turn on your TV first before you power on MiniPC.

5. How to changing display language?

a. Select PC settings > Control Panel > Clock, Language and Region.

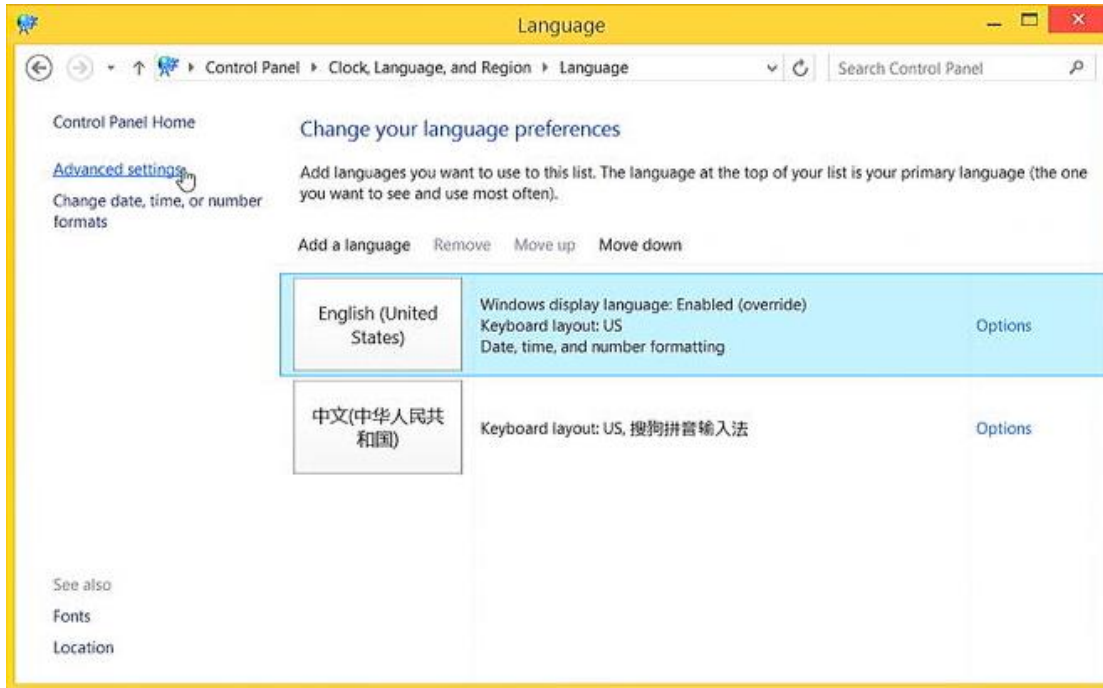


- b. Choose Add language > Advanced settings > Override for display Languages>
Choose the language as your want.



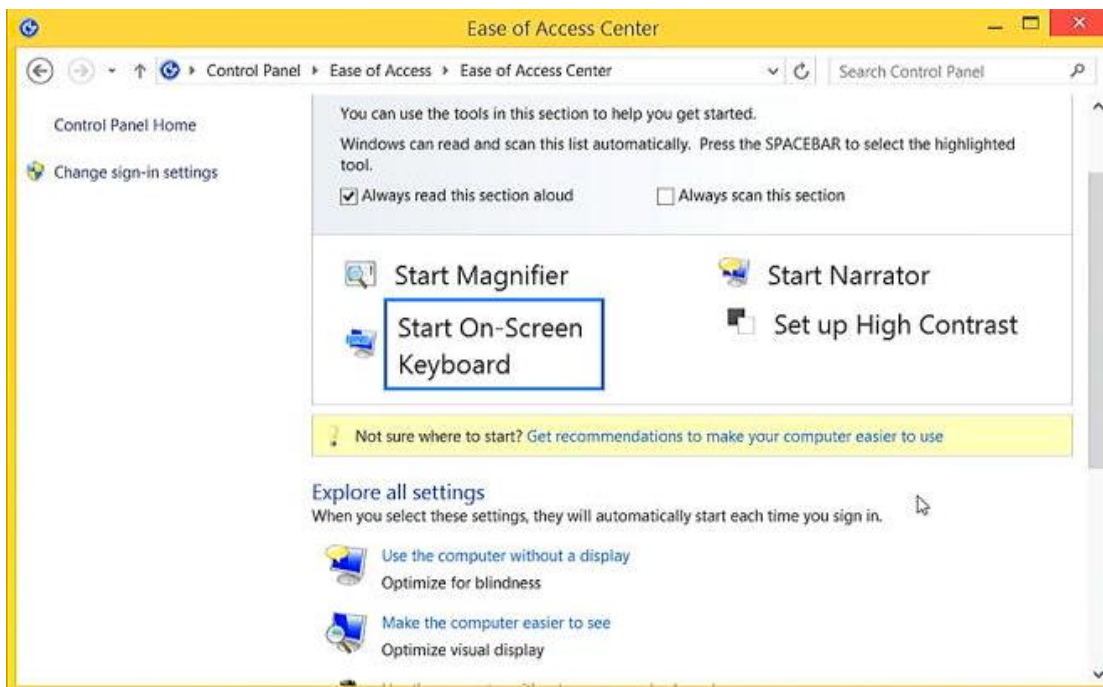
6. How to add Language input?

- a. Select PC settings > Control Panel > Clock, Language and Region.
b. Choose Add language > Advanced settings > Override for default input Languages>
Choose the language as your want.



7. How to use virtual keyboard?

- a. Select PC settings > Control Panel > Ease of Access.
- b. Choose Start On- Screen Keyboard.

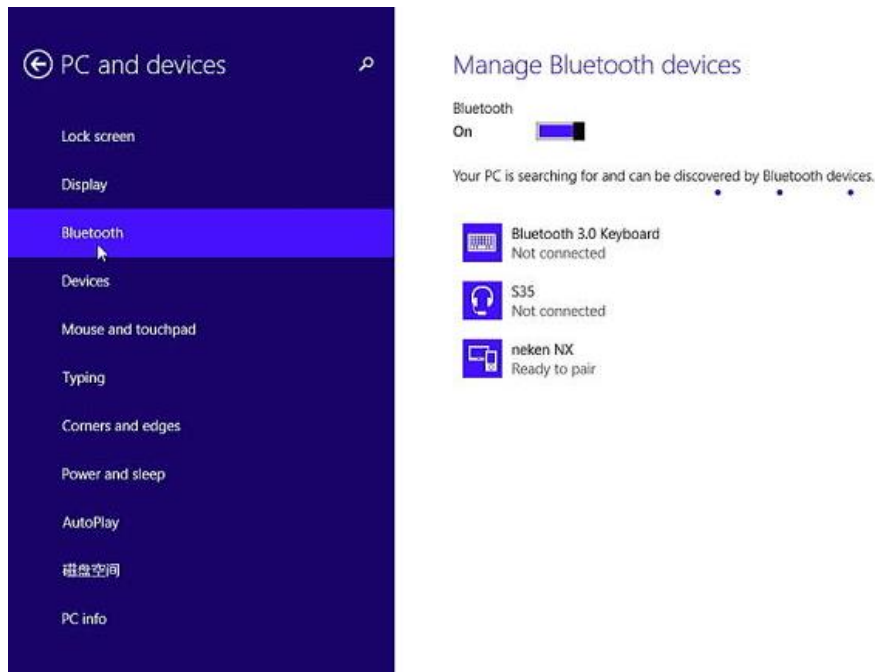


8. Does MeLE PCG03 supports windows8.1 or windows 7 or Windows XP?

MeLE PCG03 with pre-installed **Windows 8.1 for Entry Desktop/AiOs** for better desktop experience. Windows 7 or XP is unable to be installed, which is not supported from Intel and Microsoft.

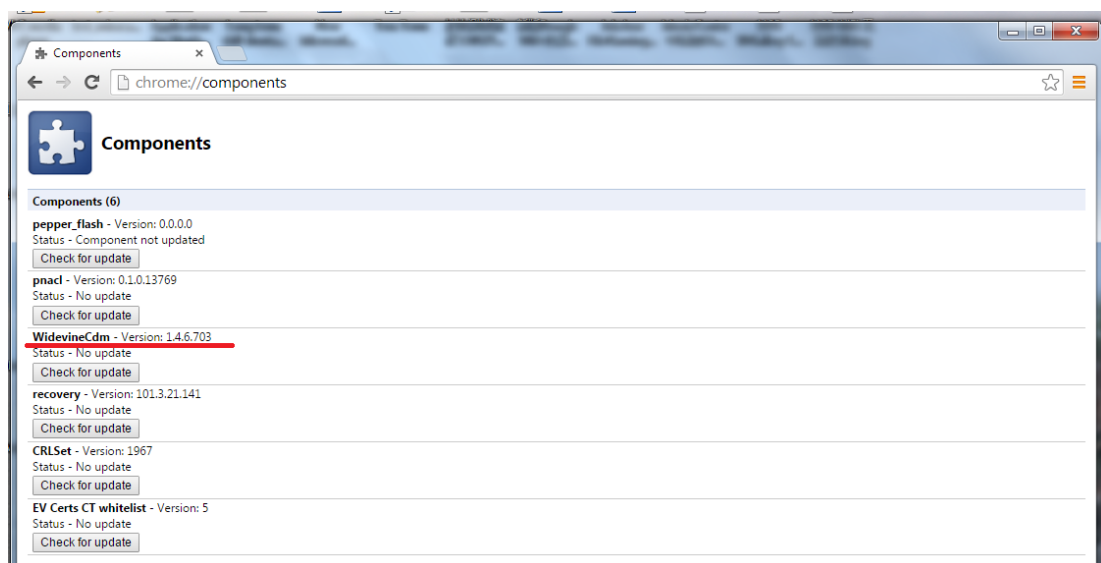
9. How to connect a Bluetooth device?

Chose Setting> PC and devices > Bluetooth, click the device, then MeLE PCG03 will parent with the Bluetooth device automatically.



10. How to watch movie on Netflix through browser?

- Install Chrome.
- launch Chrome on your MiniPC, type `chrome://components` in the address bar, then update WidevineCdm to the latest version. Now you can watch movie on Netflix through Chrome.



11. How to reinstall Windows 8.1 from USB flash disk?

- a. Prepare a USB flash disk with FAT32 file system, and change the volume label to WINPE.
- b. Prepare the install files in the root direction of your USB flash disk.



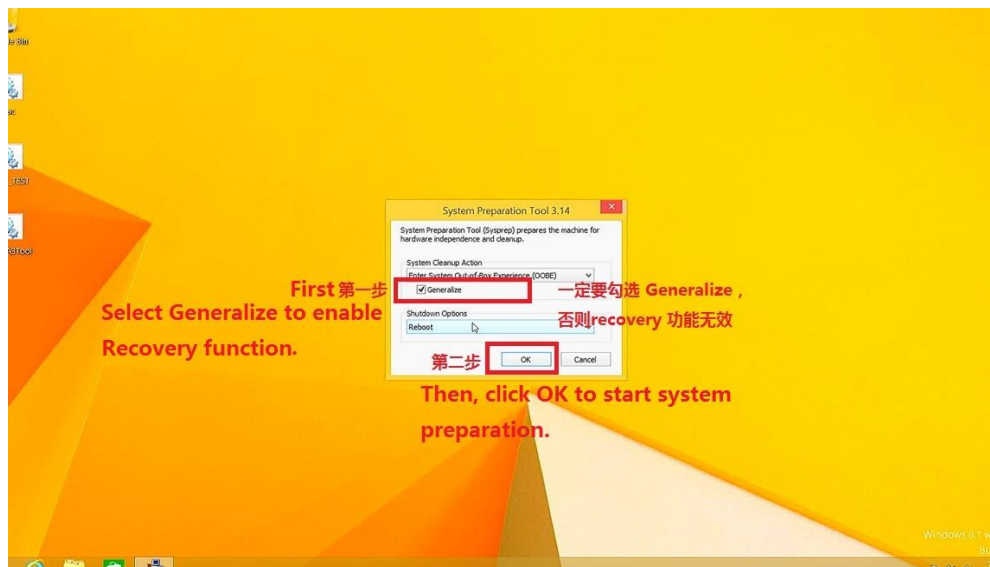
- c. Plug the USB flash disk into MiniPC, and connect a keyboard.
- d. Press the power button and press F7 or Delete continuously to enter into select boot device menu. Select your USB flash disk to reinstall Windows 8.1. There is no need to install drive separately with the install img provided by us.



- e. MiniPC will shutdown while the install process finished. Plug out the USB flash disk, then press power button to power on your MiniPC.

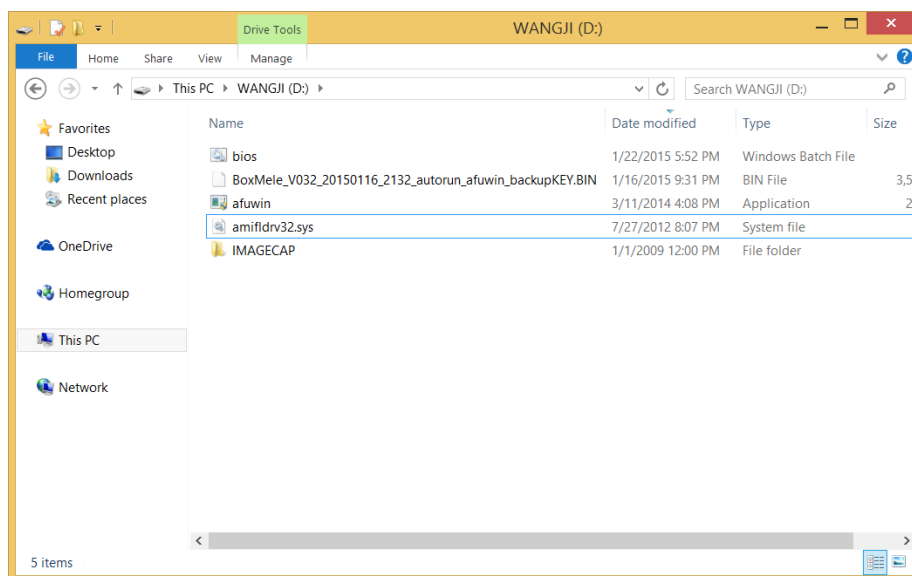
- f. The first time you boot your MiniPC, you need select Generalize to enable Recovery function,

then click OK to start system preparation.

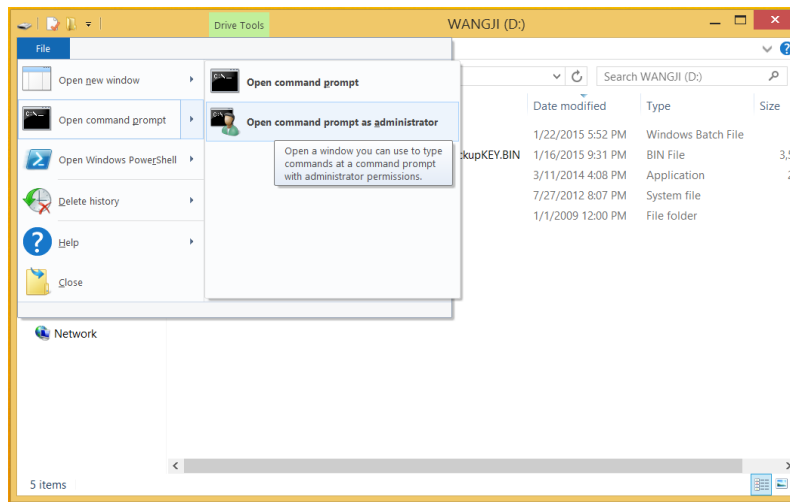


12.How to install BIOS?

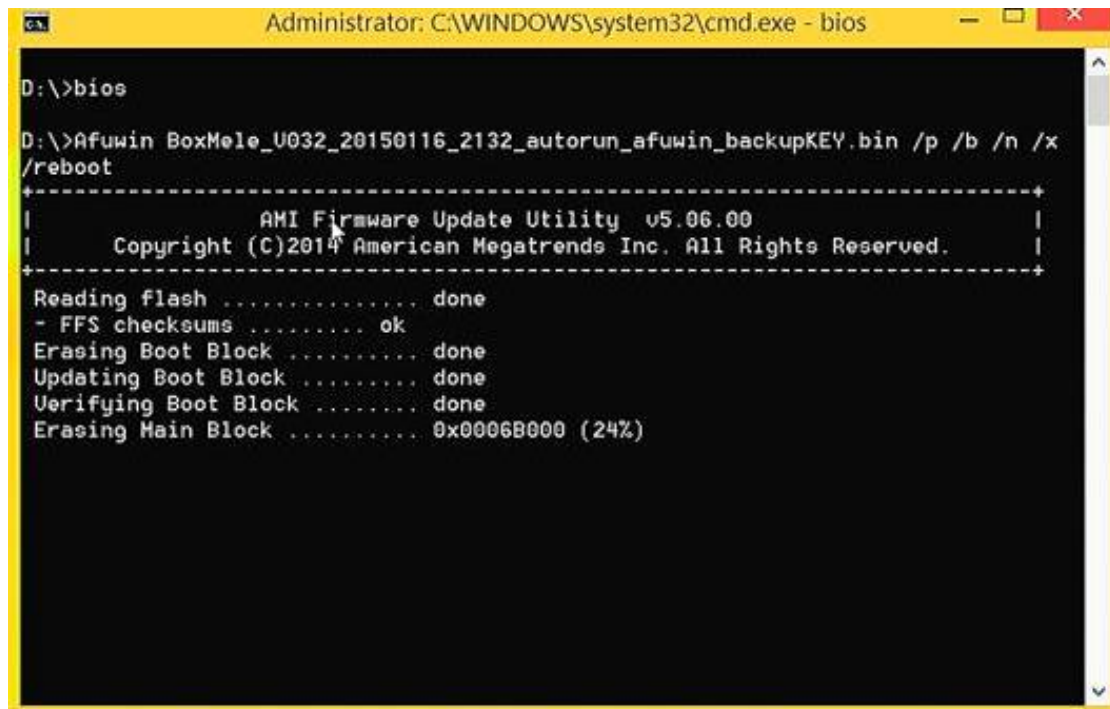
a. Prepare the BIOS files in root the direction of your USB flash disk. Don't rename any files.



b. Open your USB flash disk, Click File ->Click Open Command Prompt as administrator.



c. Type bios and Press Enter to start installing.



d. MiniPC will restart after the install process finished.

Warning: Installing a wrong BIOS or the Power is cut off during BIOS installation will erase your windows KEY or damage the hardware, which is not covered in RMA warranty scope. We strongly suggest not to re-install BIOS if your mini PC is pre-installed with activated Windows.

13.What to do when the home screen is cut by TV?

We suggest you,

- Modify the Display Setting(Photo Setting or Screen Setting) of the TV.
- Home Screen ,Click Right Mouse ->Screen Resolution, change resolution.
- Home Screen ,Click Right Mouse ->Screen Resolution -> Advanced Setting -> Intel HD Graphics Panel , change Refresh Rate .

14. What to do when there is no display on TV's HDMI?

There may no display on some TV due to the bug of graphics card. In such a case, we suggest you,

- a. Use VGA to connect your TV or monitor, and use Audio jack to connect your amplifier.
- b. Use a HDMI to AV converter then connect to the composite port of your TV.

15. How to check my windows is with official license?

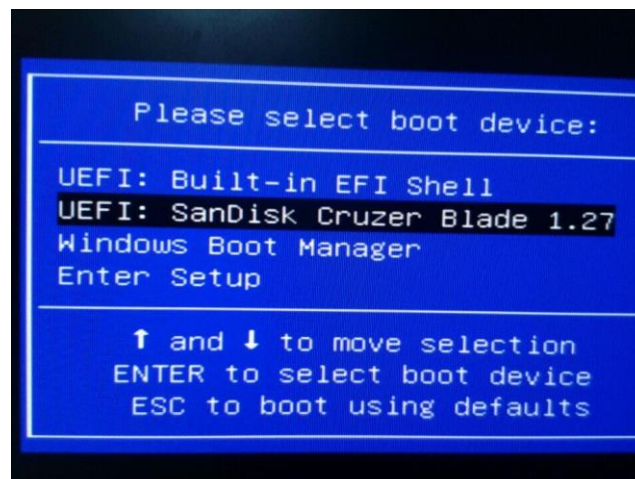
- a. There must no watermark of Windows 8.1 with Bing Build 9600 on the bottom right corner of home screen.
- b. Go to Control Panel->System and Security->System, you can get the information that **Windows is activated**.
- c. Use the CheckupKey tool to check the KEY ID which is provided by Microsoft.

When your windows is activated, you can update your system and won't get the blue activate notification windows.

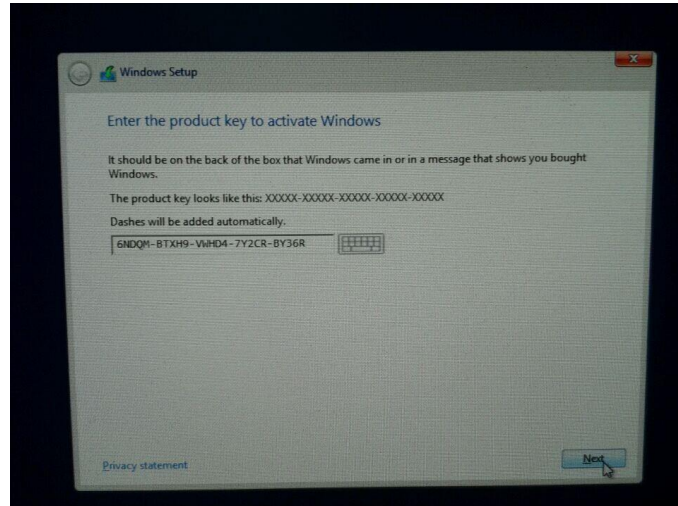
16. How to install Windows8.1 from ISO?

Take Windows8.1 for example.

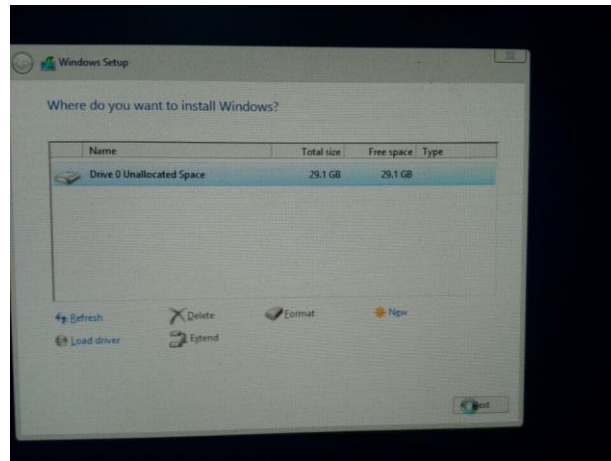
- a. Prepare a USB flash disk with FAT32 file system, and change the volume label to WINPE.
- b. Decompression the ISO of Windows8.1 into the root the direction of your USB flash disk.
- c. Plug the USB flash disk into MiniPC, and connect a keyboard.
- d. Press the power button and press F7 or Delete continuously to enter into select boot device menu. Select your USB flash disk and press Enter.



- e. Input the product key.



f. Select the disk where to install Windows.



g. MiniPC will restart after the install process finished.

h. Install drives for your MiniPC.

17. How to Recovery my MiniPC on Windows8.1

Press Windows key + I to enter into Settings, then click Change PC settings-> click Update and recovery->Recovery, select Remove everything and reinstall Windows.